

Property Features:

- Four-Story 19,600 SF Corner Building + 1,500 SF Yard
- Total Lot SF: 6,400 SF (80' x 80')
- Building Dimensions: 60' x 80' (slightly irregular)
- Yard Dimensions: 20' x 80' fronting 4th Avenue
- Total Building SF: 19,600 SF (Above Grade)
- 24,600 SF Total w/ Basement
- Ground Floor - 4,900 SF | 2nd Floor - 4,900 SF
- 3rd Floor - 4,900 SF | 4th Floor - 4,900 SF | Basement - 4,900 SF
- C2-4/R7A Zoning (FAR 4.0 - Residential - FAR 5.01 Inclusionary Housing
FAR 2.0 - Commercial - FAR 4.0 - Community Facility)
- Can Build 25,600 SF - Build Additional 6,000 SF

FOR SALE

Subway Stop **R** (53rd St / 4th Avenue)

Asking Price:

\$6,200,000

Taxes:

\$74,145.00

Vincent Lopez

Exclusive Agent:

917-523-5772

vlopez@krgnyc.com

Jacques Wadler

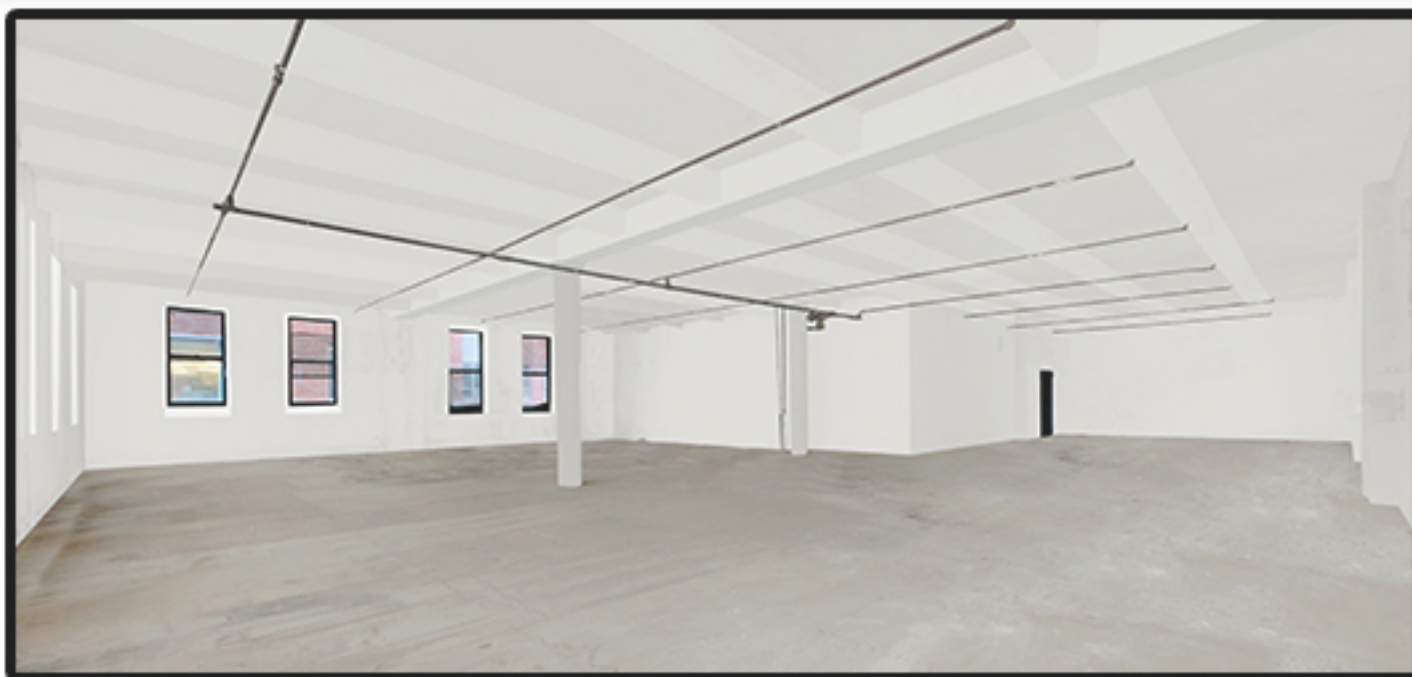
Exclusive Agent:

516-650-1123

jwadler@krgnyc.com

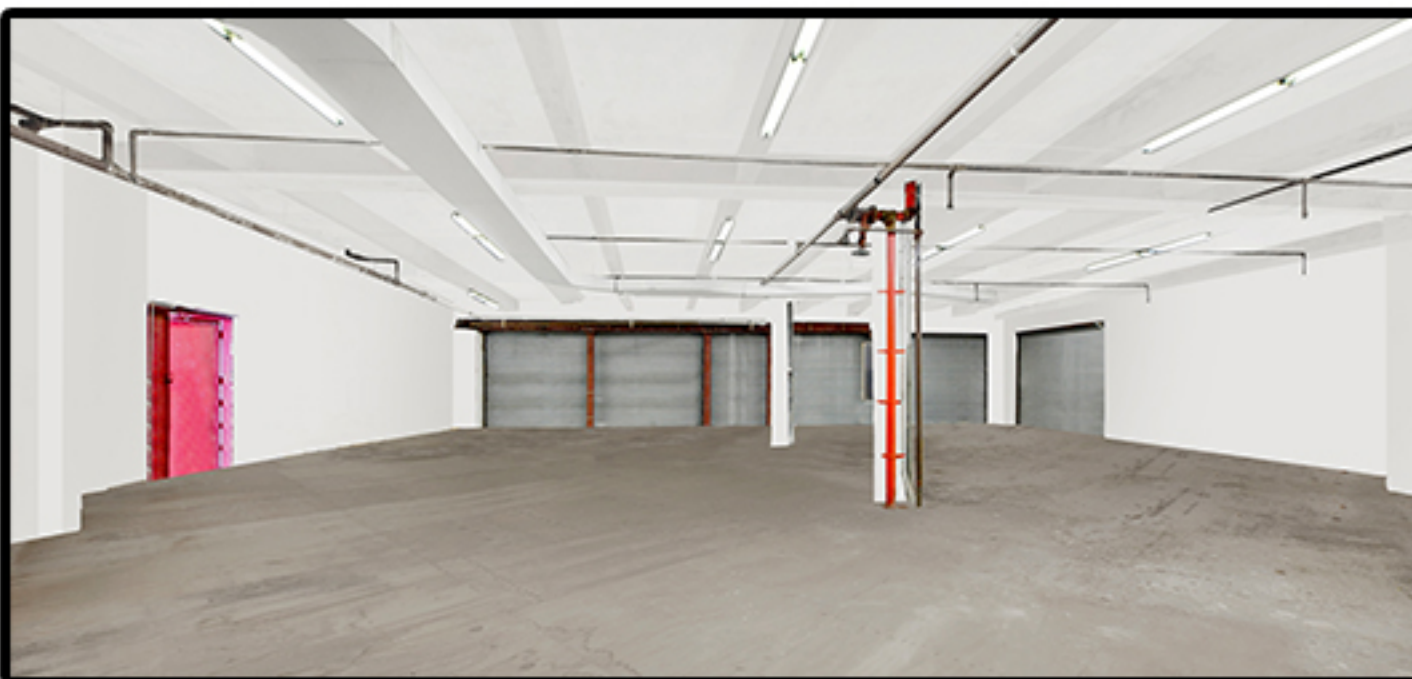
5018 4TH AVENUE, SUNSET PARK, BROOKLYN





BUILDING FEATURES:

- BUILDING CONSTRUCTION: POURED CONCRETE, STEEL FRAME & BRICK FACADE
- 12' CEILING HEIGHT ON GROUND, 2ND & 3RD FLOORS
- 18' CEILING HEIGHT - 4TH FLOOR
- WINDOWS ON FOUR SIDES FOR 3RD & 4TH FLOORS
- WINDOWS ON THREE SIDES FOR 1ST & 2ND FLOORS
- FREIGHT ELEVATOR WITH FIVE STOPS (INCLUDING BASEMENT)
- ONE STAIRCASE
ONE FIRE ESCAPE
- FULLY SPRINKLERED
- GAS HEAT / HEAVY POWER



5018 4TH AVENUE, SUNSET PARK, BROOKLYN





5018 4TH AVENUE, SUNSET PARK, BROOKLYN



40

41

46

47

48

42

51ST STREET

4TH AVENUE

0 10 20
feet

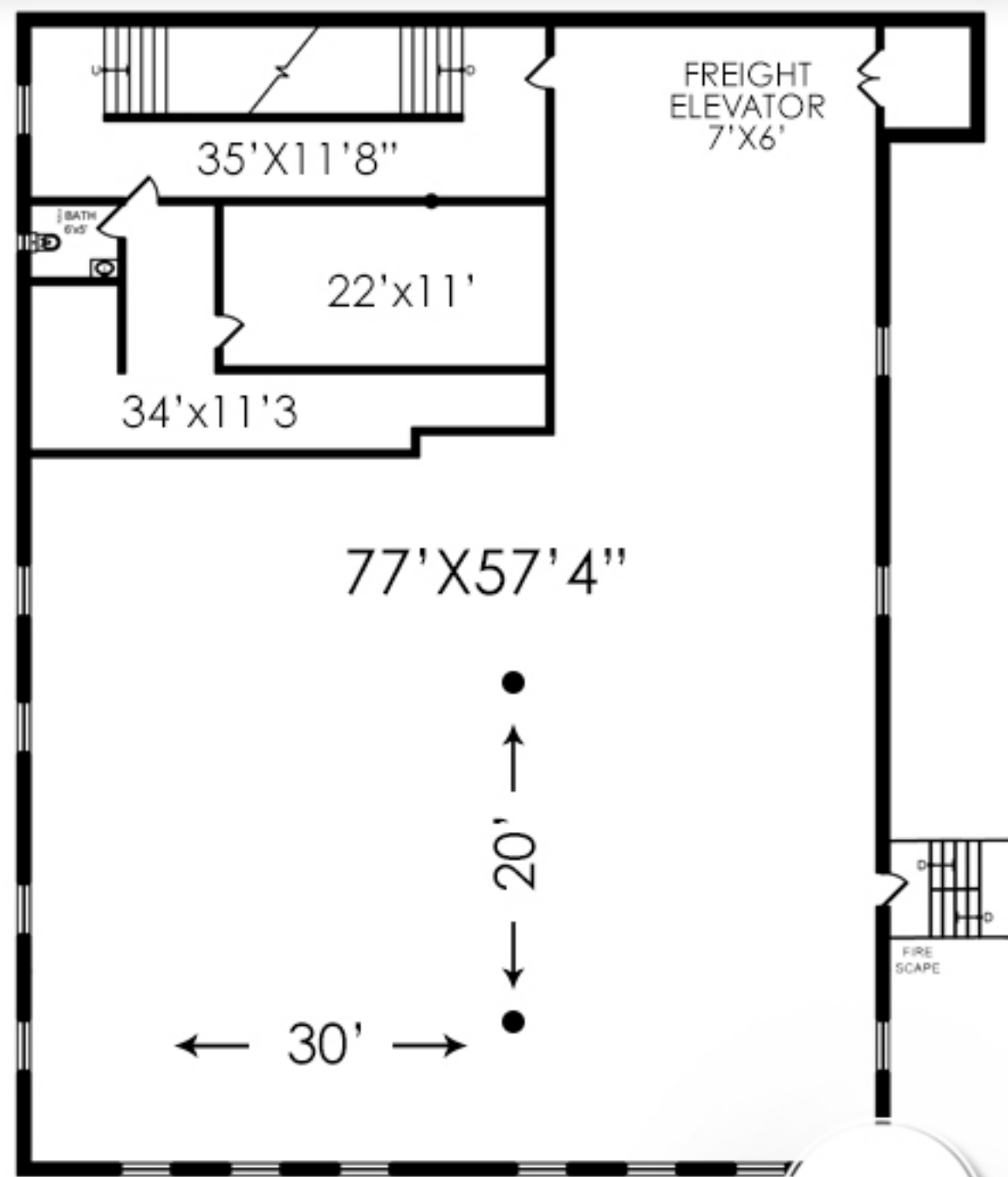
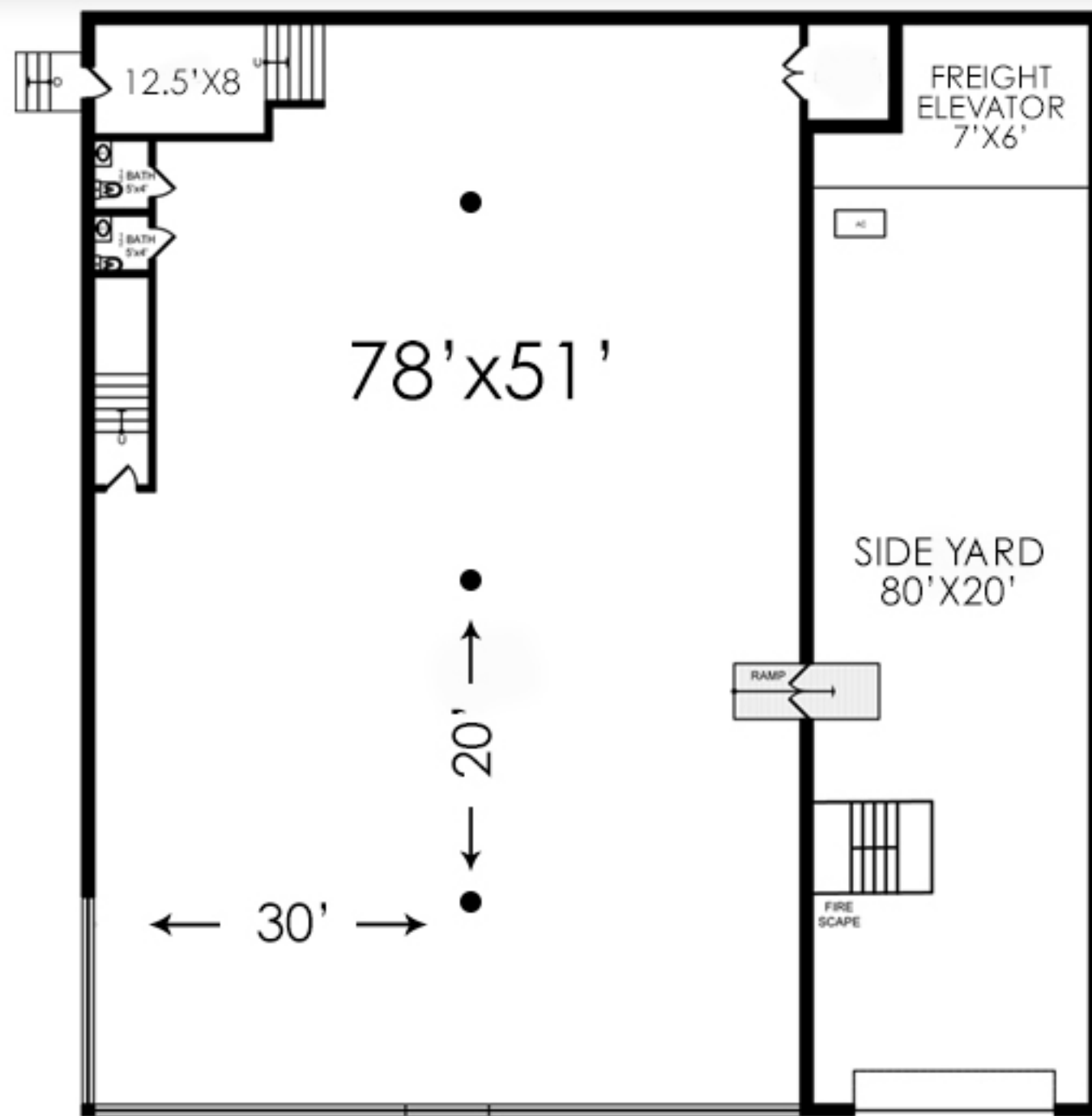
Copyright 2020 The City of New York



5018 4TH AVENUE, SUNSET PARK, BROOKLYN

ALL INFORMATION IS FROM SOURCES DEEMED RELIABLE, BUT SUBJECT TO: ERRORS, CHANGES WITHOUT NOTICE, PRIOR SALE OR LEASE, WITHDRAWAL WITHOUT NOTICE. ALL MEASUREMENTS ARE APPROXIMATE



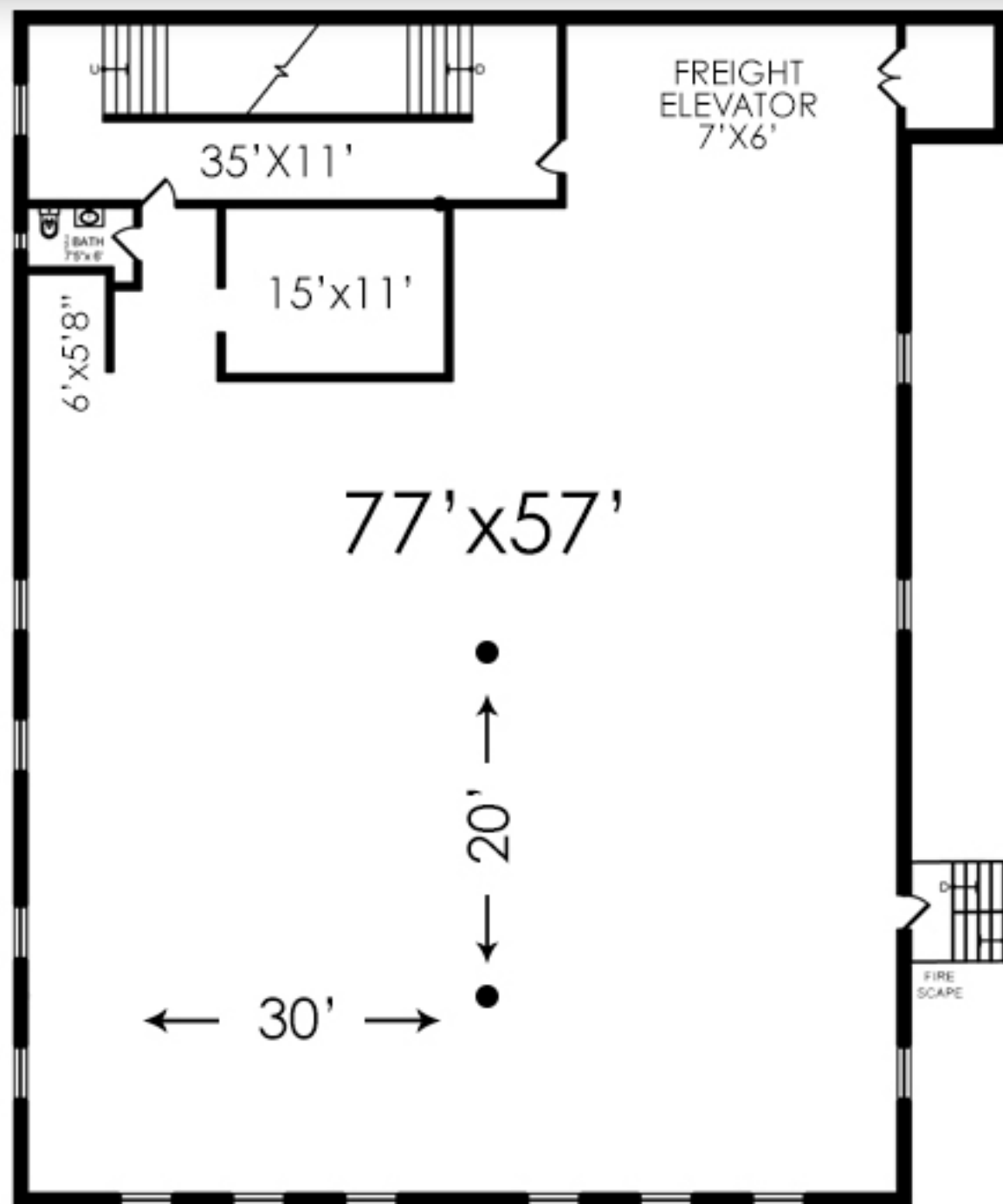


1ST FLOOR

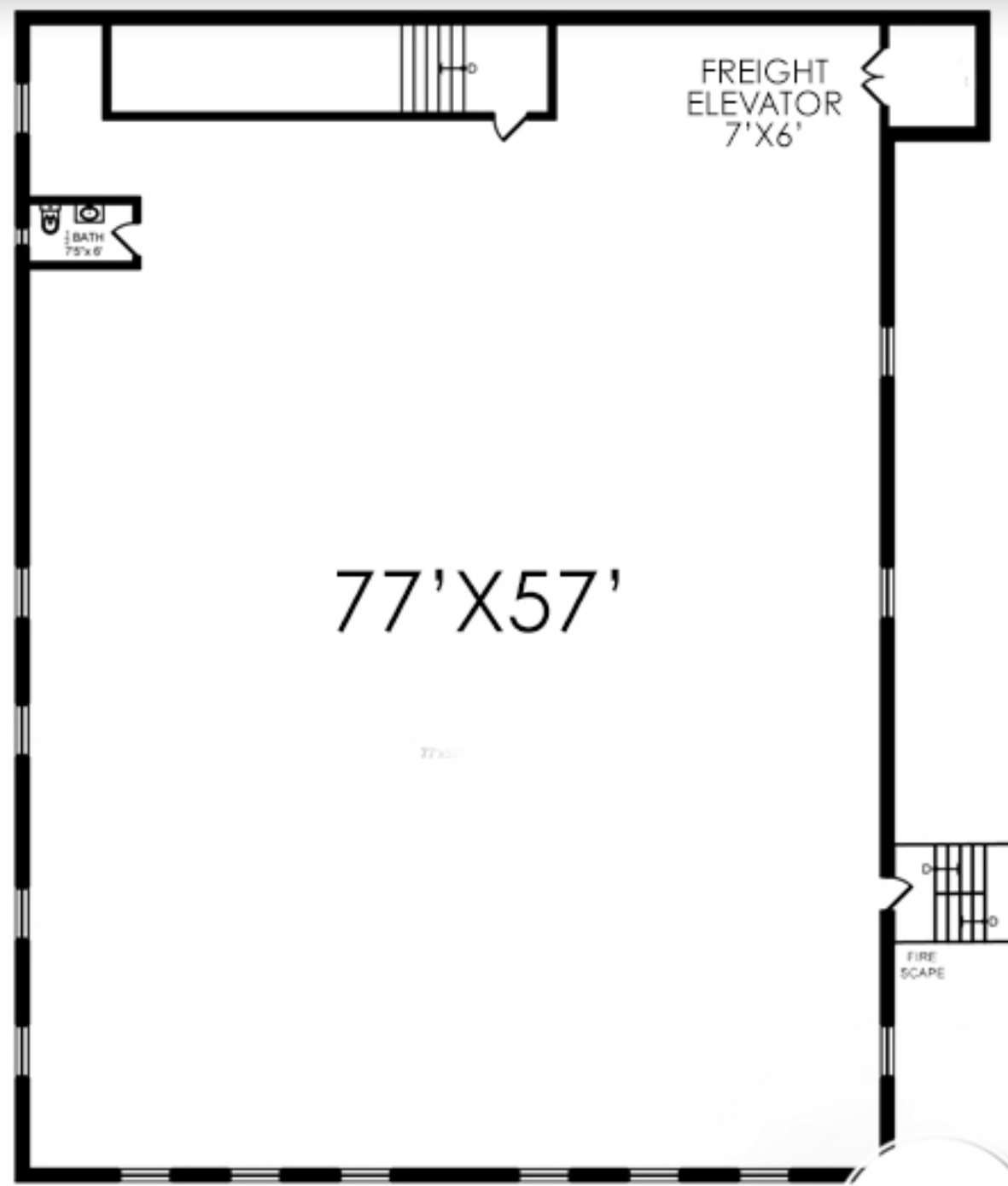
2ND FLOOR

KRG

5018 4TH AVENUE, SUNSET PARK, BROOKLYN



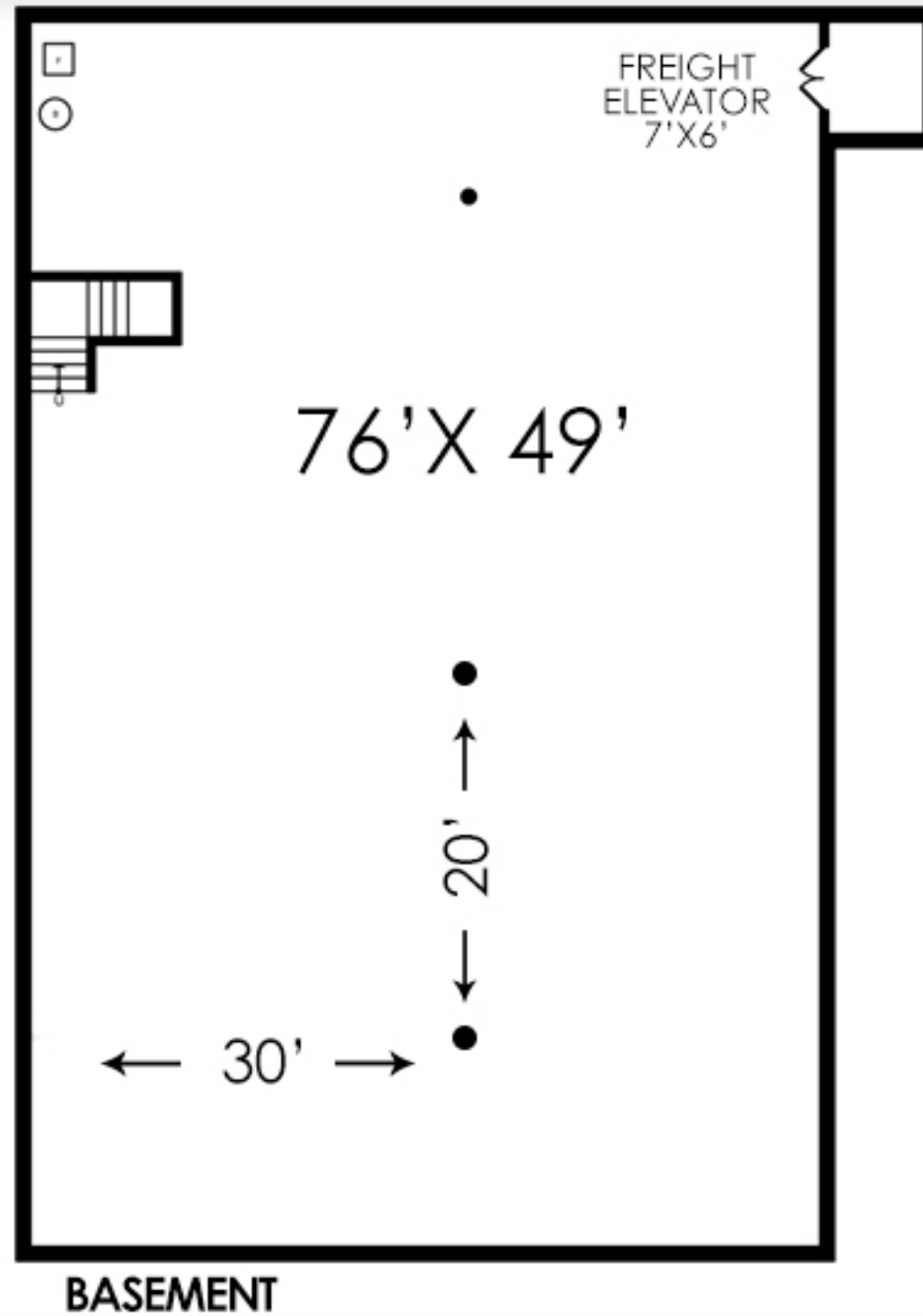
3RD FLOOR



4TH FLOOR

KRG

5018 4TH AVENUE, SUNSET PARK, BROOKLYN



5018 4TH AVENUE, SUNSET PARK, BROOKLYN

