

FOR LEASE

1,050 SF Flex Space

10 Troutman Street
(b/t Bushwick Avenue & Myrtle Avenue)
Bushwick, Brooklyn



Highlights:

- Ground Floor
- Vanilla Box
- One Drive-In Gate (9.25'h x 8.58'w)
- One Restroom
- 200 Amp — 3 Phase Power
- 17' Frontage
- 10' – 11' Ceiling Heights
- Split HVAC — Heating & Cooling
- LED Overhead Lighting
- C8-1 Zoning

Perfect for Studio, Gallery, Retail or Warehouse

Subway: 1.5 Blocks from the Bushwick Avenue / Myrtle Avenue **J M Z** Subway Station

Asking Rent: \$3,500.00 per Month

Jacques Wadler
Exclusive Agent:
516-650-1123
jwadler@krgnyc.com

Vincent Lopez
Exclusive Agent:
917-523-5772
vlopez@krgnyc.com

10 TROUTMAN STREET, BUSHWICK, BROOKLYN





10 TROUTMAN STREET, BUSHWICK, BROOKLYN



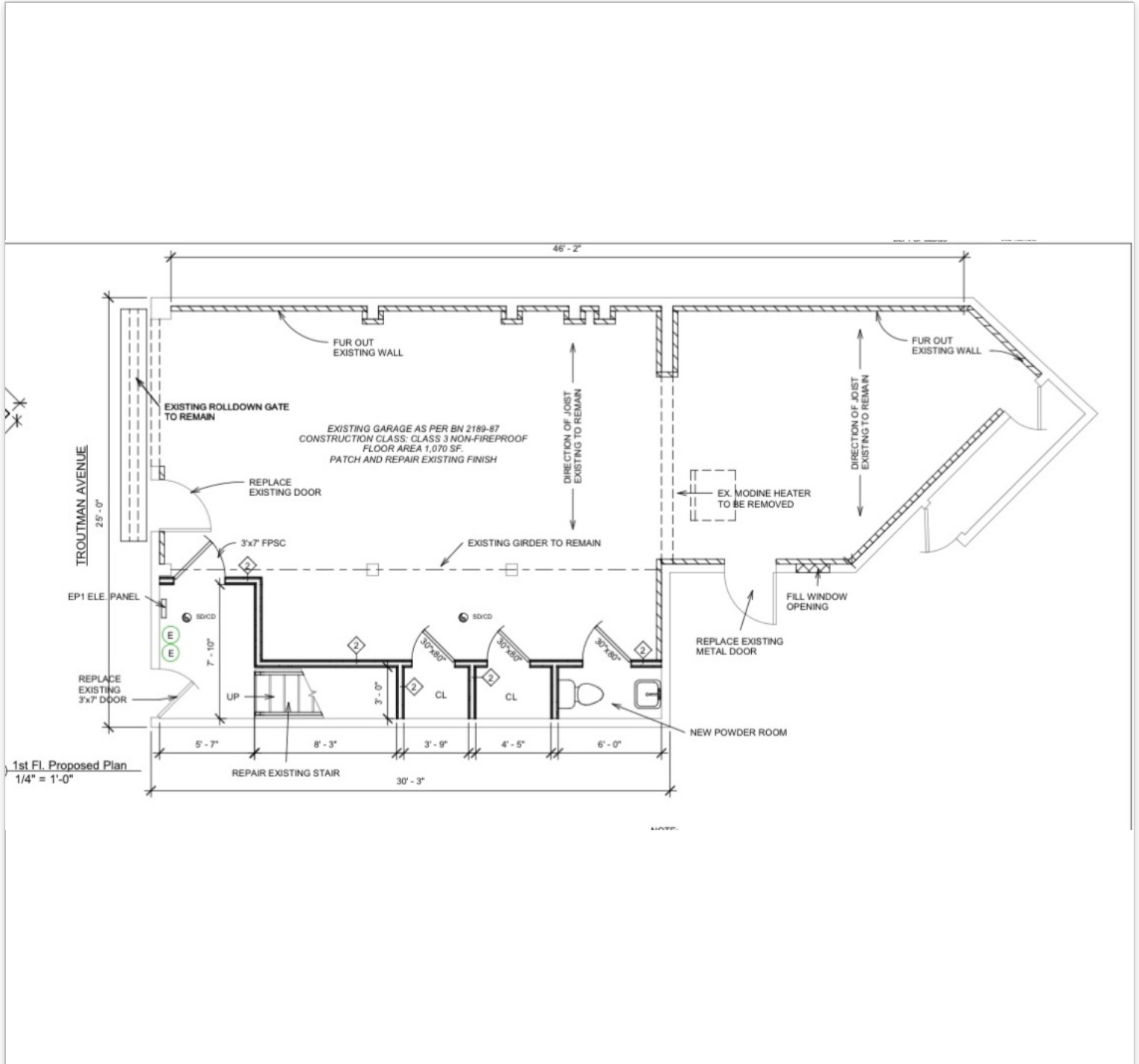
ALL INFORMATION IS FROM SOURCES DEEMED RELIABLE, BUT SUBJECT TO: ERRORS, CHANGES WITHOUT NOTICE, PRIOR SALE OR LEASE, WITHDRAWAL WITHOUT NOTICE. ALL MEASUREMENTS ARE APPROXIMATE



10 TROUTMAN STREET, BUSHWICK, BROOKLYN



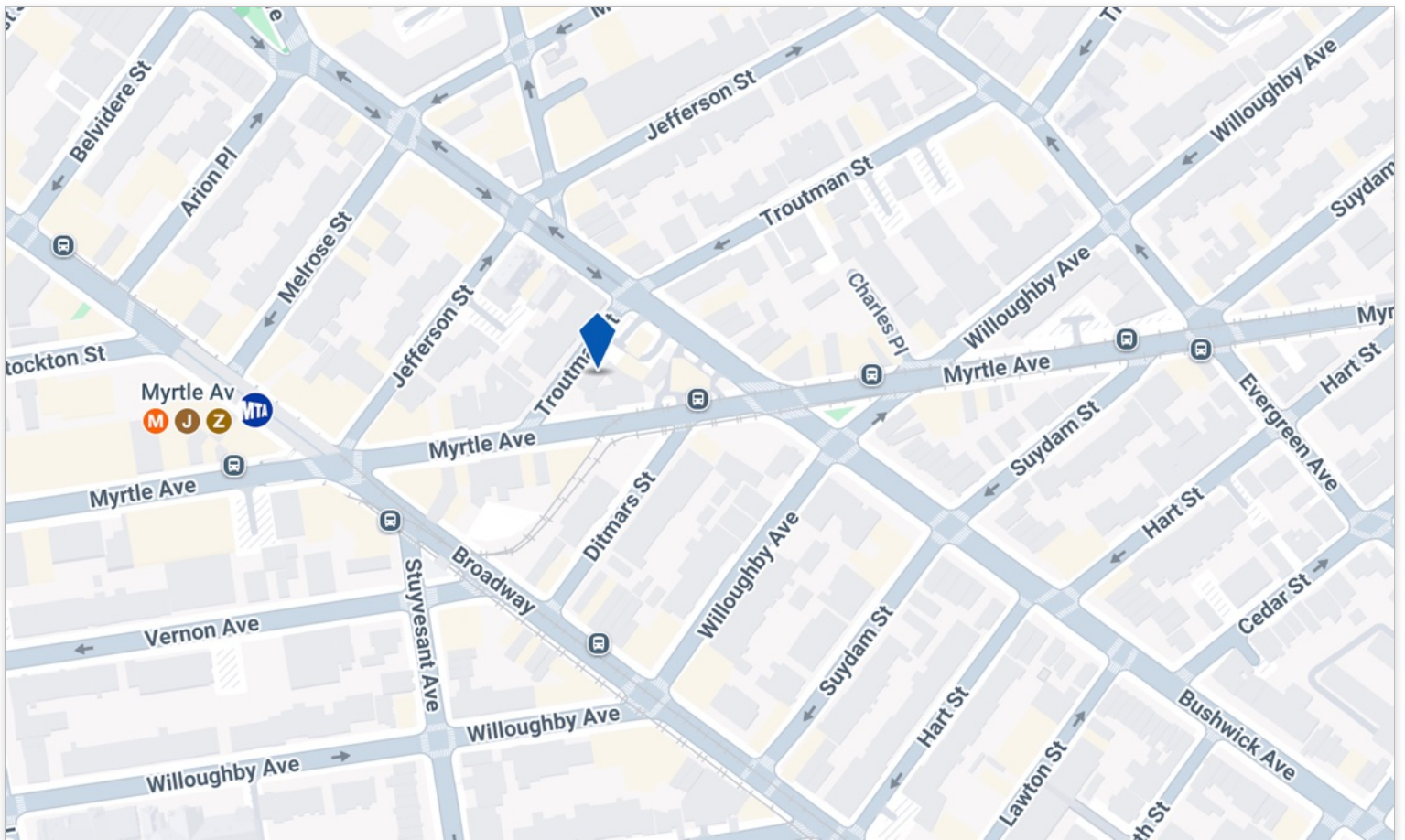
FLOOR PLAN



10 TROUTMAN STREET, BUSHWICK, BROOKLYN



LOCATION



10 TROUTMAN STREET, BUSHWICK, BROOKLYN

